

FLYING FURTHER

FALL 2024

PROGRESS REPORT

TEMPLE UNIVERSITY
STRATEGIC PLAN

PLAN.TEMPLE.EDU



By 2030, Temple will be the most inclusive and innovative urban, public, comprehensive university, providing a high-value education that prepares students for the future of work, building connected and healthy communities, and forging groundbreaking discoveries for the future of the world.

STRATEGIC PRIORITIES

Our five strategic priorities are fueled by our mission and values. They define the university's key commitments and provide the roadmap for achieving our aspiration.

- **BOUNDLESS ACCESS**
- **EDUCATIONAL EXCELLENCE**
- **THOUGHT LEADERSHIP**
- **COMMUNITY ENGAGEMENT**
- **FOUNDATION FOR TOMORROW**

PLANNING PROCESS

TEMPLE UNIVERSITY'S strategic plan represents a bold and innovative vision for our future. The planning process began in 2020 and involved collaboration across the university community to ask the difficult questions, understand our challenges and leverage our opportunities.

In Phase 1 (Spring 2020), the Steering Committee focused on assessment and research. Phase 2 (Spring 2021) focused on developing the aspiration statement and strategic priorities. For Phase 3, which began in Summer 2022, we are transforming initiatives from ideas to reality.



We have constructed a comprehensive, university-wide framework to support the development and execution of our strategic plan. Project leads develop detailed implementation plans with measurable outcomes, and the Office of Strategic Initiatives assists with challenges and barriers to ensure that each initiative continues to advance. This collaborative effort is guiding us toward achieving our goals.

PLEASE VISIT **PLAN.TEMPLE.EDU**
FOR MORE INFORMATION ABOUT
THE PLANNING PROCESS.

STRATEGIC PLAN TIMELINE



SPRING 2020

Engaged students, faculty, and staff for initial input



SPRING 2021

Developed strategic priorities



FALL 2022

Launched Strategic Plan and initiatives



SUMMER 2023

Revisited Strategic Plan with many stakeholders



FALL 2023

Activated the 30th strategic initiative



SUMMER 2024

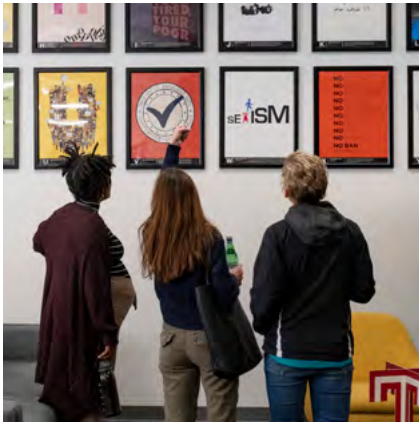
Deployed an automated method to track initiative KPIs

BOUNDLESS ACCESS

Life-changing opportunities for all students to soar.

We will provide a student experience focused on excellence, access and bold engagement—from admission to career—that empowers students to thrive holistically in an affordable, inclusive, and dynamic metropolitan setting.

HIGHLIGHTED INITIATIVES



DEI HUB

Achieve best-in-class status in Diversity, Equity, and Inclusion by advancing our faculty and staff recruitment, retention, and support; creating premier opportunities and space for activities and efforts; and expanding community pathways.



Student group reservations increased by 400% since moving IDEAL office to central campus



Center for Anti-Racism: 40 programs since opening in November 2022



Established Interfaith Council and two new interfaith prayer rooms on campus



MENTAL HEALTH AND WELLNESS

Implement recommendations of the mental health and wellness task force aimed at augmenting mental health and wellness services for students and employees, as well as improving coordination and enhancing infrastructure.



New Health and Well-being Division created as a single point of access for students and employees



22.7% increase in counselors



150% increase in hours when students can register for services

ADDITIONAL STRATEGIC INITIATIVES

Blue Ribbon Commission

Enrollment Optimization

Financial Aid Program

Constituent Relationship Management

Student Retention

Temple adopts Slate in 2024

New Temple Promise full aid for Philadelphia residents whose families earn \$65,000 or less

EDUCATIONAL EXCELLENCE

World-class academic opportunities that are real-world relevant.

We will deliver a future-oriented and interdisciplinary curriculum that leads to career readiness, active citizenship, personal growth, leadership, and impact.

HIGHLIGHTED INITIATIVES



GENERAL EDUCATION REVIEW

Reassess and enhance Temple's General Education curriculum in ways that support our students' career success, engagement in issues of importance, and lifelong commitment to inquiry.



First review of Gen Ed in over 10 years



Thorough review with many stakeholders



New program expected for Fall 2027



GLOBAL ENGAGEMENT

Leverage our global campuses and expand our partnerships in strategic regions around the world to advance learning, research, and engagement for students and faculty.



Temple Rome moved to a historical, central location at Piazza di Spagna in September 2024



Temple University Japan is opening a new campus in Kyoto in January 2025



New international student enrollment is up more than 60% over the last two years

ADDITIONAL STRATEGIC INITIATIVES

Academic Organization

College-Central Relationship

Student-Athlete Academic Performance

Shared Governance

Athletics Team Performance

#1 in Academic Progress Rate (APR) in conference

THOUGHT LEADERSHIP

Knowledge creation that transforms the human experience.

We will spearhead cutting-edge research, scholarship, and creative expression to take on and solve society's greatest challenges.

HIGHLIGHTED INITIATIVES



RESEARCH INNOVATION

Advance the university's research mission through improved coordination, expanded research infrastructure, and greater opportunities for student engagement in research.



New Temple University Research Council



Innovation Nest (iNest) opened in March 2024



Increased Research Office staff by 22.2% since 2022



INTERDISCIPLINARY COLLABORATION

Enrich and expand interdisciplinary opportunities and collaboration in research and academic programs.



Increased university-wide research programming



Graduate School housing interdisciplinary graduate programs



Increased faculty recognition for interdisciplinary work

ADDITIONAL STRATEGIC INITIATIVES

University Professorships

Areas of Academic Excellence

Faculty Advancement

Faculty Cluster Hiring

Temple Health Research Integration

New Associate Director for Faculty Inclusion Initiatives

COMMUNITY ENGAGEMENT

Accelerated commitment to impactful civic and community engagement.

We will connect and partner with our local, national, and global communities to build bridges and support well-being.

HIGHLIGHTED INITIATIVES



VIOLENCE PREVENTION

Advance Temple’s role in violence reduction work and research, coordinate with community and government partners to develop new efforts, and serve as a model for public-private partnership, and identify other initiatives arising out of the work of the violence reduction task force.



New publicly available Safety Initiatives Dashboard



Added eighteen more 360° Code Blue Phone cameras since 2023



Best Nest Program: 27 Preferred Landlord properties



COMMUNITY GATEWAY

Coordinate Temple’s vast array of community engagement and outreach efforts and effectively connect North Philadelphia neighbors with resources, services and programs.



First of its kind Community Gateway opened in Spring 2024



Services include job training and placement, youth engagement, academic enrichment, and adult education



Over 140 referrals in three months since opening

ADDITIONAL STRATEGIC INITIATIVES

Campus Safety Evaluation

Athletics Engagement

Temple Health Regional Expansion

Recent additions include:

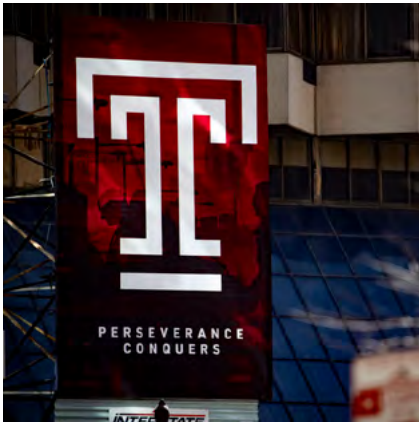
- Chestnut Hill Hospital
- Women & Families campus

FOUNDATION FOR TOMORROW

Planning for a sustainable future.

We will examine and enhance university-wide systems, infrastructure and marketing through careful analysis and data-driven decision-making to position the Temple community for success now and in the future.

HIGHLIGHTED INITIATIVES



BRANDING AND EXTERNAL ENGAGEMENT

Develop and communicate a clear and compelling branding campaign emphasizing how our teaching, learning, research, and creative activity benefit our communities and the world.



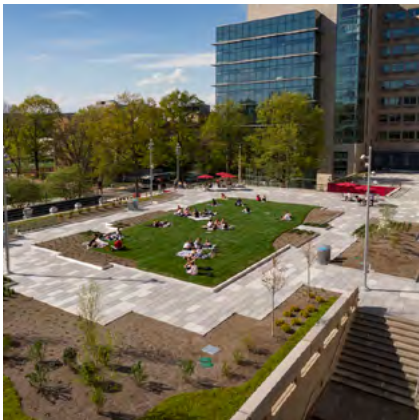
Launched new Owl mark
Summer 2023



New VP for Strategic
Marketing and
Communications
Fall 2023



Brand agency of
record selected
Summer 2024



CAMPUS DEVELOPMENT PLAN

Create and implement a Campus Development Plan focused on buildings and facilities that produce a best-in-class urban university experience.



Engaged Sasaki
architecture firm to lead
the planning and
design process



1,564 responses to
campus analysis survey



First draft of campus
development plan
May 2024

ADDITIONAL STRATEGIC INITIATIVES

RCM Optimization

Data-Driven Decision-Making

Employee Engagement

Business Efficiencies

Reputation and Rankings

Dean Reviews

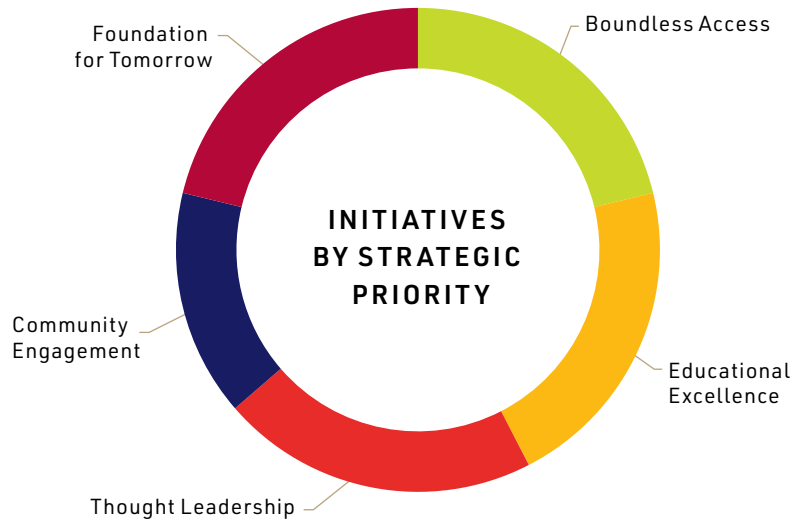
Strategic Communication
and Marketing

New 360° assessment model

MEASURING OUR PROGRESS

FIGURES AS OF **SEP. 2024**

STRATEGIC INITIATIVES



INITIATIVES BY PHASE

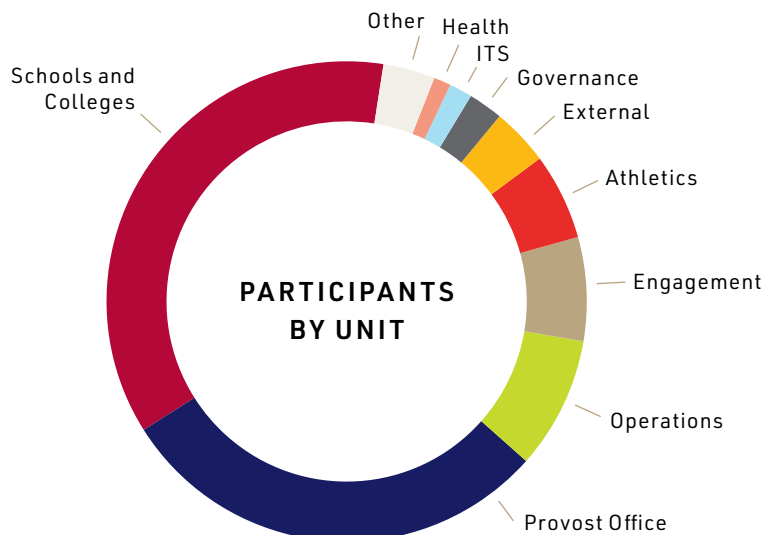


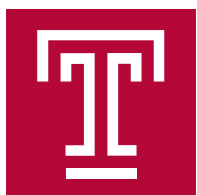
STRATEGIC INITIATIVES PARTICIPATION

22 WORKING GROUPS

258 INITIATIVE PARTICIPANTS

6K WEBSITE VISITORS SINCE JAN 2024





Temple
University

**TEMPLE UNIVERSITY
STRATEGIC PLAN**

PLAN.TEMPLE.EDU

Vice Provost for Strategic Initiatives

Temple University
Sullivan Hall, First Floor
1330 W. Polett Walk
Philadelphia, PA 19122